



**AI Training Data Platform to accelerate
the development of AI**

Partner for better AI performance

CROWDWORKS

80% of time spent on AI model development is allocated to process data.
Crowdworks accelerate your AI model performance with qualified data.

Major Clients

400+



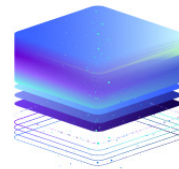
Crowdworkers

390,000+



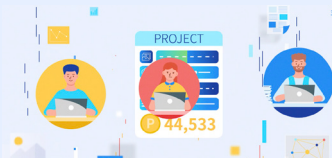
Data Processed

100M+



Crowdworks, a solution that emerged to solve the problems of quality, cost, and speed of AI training data processing

Launched in 2017, crowdworks online service, a crowdsourcing-based AI data building platform, provides AI data that most accurately meets customer needs at a reasonable cost.



Crowdworks works like this

A professional PM opens various data collection/annotation projects such as text, image, video, and voice on the platform, and 390,000 crowdworkers participate. The labeled data is delivered to customers in line with quality standards through a thorough inspection system.



With the development of the artificial intelligence data market, Crowdworks platform has grown.

As clients and projects became increasingly diversified, the expertise of Crowdworks workers and platforms also grew. As AI increasingly enters professional fields, Crowdworks' platform continues to evolve.

Trusted by

IT

SAMSUNG

LG Electronics

NAVER

kakao
enterprise



Telecom

SK telecom

kt

LG U+

Automotive

Uber

HYUNDAI

STRADVISION

WISE automotive

HYUNDAI
AutoEver

Finance

kakaopay

SAMSUNG FIRE & MARINE INSURANCE

Hyundai Card



kakaobank

Healthcare



AMORE PACIFIC

VUNO

Ministry of Health and Welfare
National Rehabilitation Center

maum of
MINDs Lab

Game

NC

NAVER

KRAFTON

kakaoVX

No.1 AI training data platform

Crowdworks, Korea's largest AI training data platform since 2017, provides high-quality training data, which is the core of AI development, under the vision of 'coexistence of AI and humans', and leads customer innovation and the future of AI. .

WHY CROWDWORKS

Project experiences across all industries & tailored project management skills

We collect, annotate, and inspect data suitable for the customer's requirements and complete the project within the due. You can receive detailed consulting from our PM who have experiences in 50+ industries such as automotive, manufacturing, healthcare, IT and 1,000+ various source data projects.

High data accuracy through design optimization and worker management





90% of the top 10 IT companies listed on the KOSPI in Korea are using Crowdworks services. About 60 data collection and annotation templates support optimal project design for customers, and Crowdworks' unique AI data solution minimizes the AI development time and cost.

The largest number of patents in the industry and matching of workers and projects

Worker & project matching technology that analyzes each worker's history and performance based on platform log data and profile data, including patents related to distributed processing technology, work management technology, and design optimization technology, which are the core of the data annotation process, build the optimal infra.

OUR PRODUCTS

Make your AI project the easiest with our fully-accustomed platform services

Crowdsourced Data Collection/Annotation	SaaS Platform	On-Premise	Data-based HR Management
			
Accurate data collection and annotation through 390,000+ crowdworkers & verified global BPO Partners	Optimized data processing solutions with the experience in 1,000+ projects and 60+ templates	To Ensure high level of data security, our proven On-premise solution is to better facilitate your data project.	Matching and deploying suitable data workforce based on crowds' talent pool, work performance, and skills

Provide the best quality data

The success of AI models depends on data quality. Crowdworks guarantees 99% data accuracy with the best quality management process, won 2021 Data Quality Awards hosted by the Korean Ministry of Science and ICT, and was named as a Sample Vendor in the 2022 Gartner Hype Cycle for Data Science and Machine Learning, 2022.& Hype Cycle for Artificial Intelligence 2022



Automotive / ADAS Semantic Segmentation

Data volume: 10,000 frames / Duration: 2 months



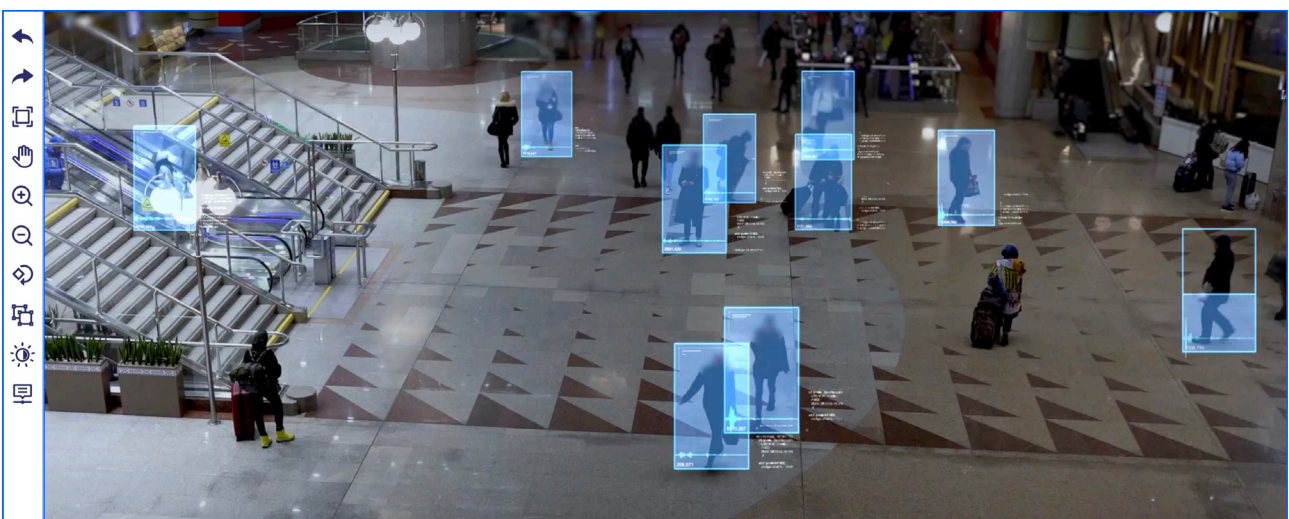
Road image semantic segmentation work for ADAS(advanced driver assistance systems). Due to the nature of autonomous driving data, it is truly a sophisticated task that could not tolerate even a single pixel error.

Thanks to our qualified data the customer achieved the target model performance 10 times faster than they expected. Now we're annotating their ADAS data on a daily basis.

It can also be used in fields that require object recognition, such as games and metaverses!

Telecommunication / Serving robot video collection and ID tracking

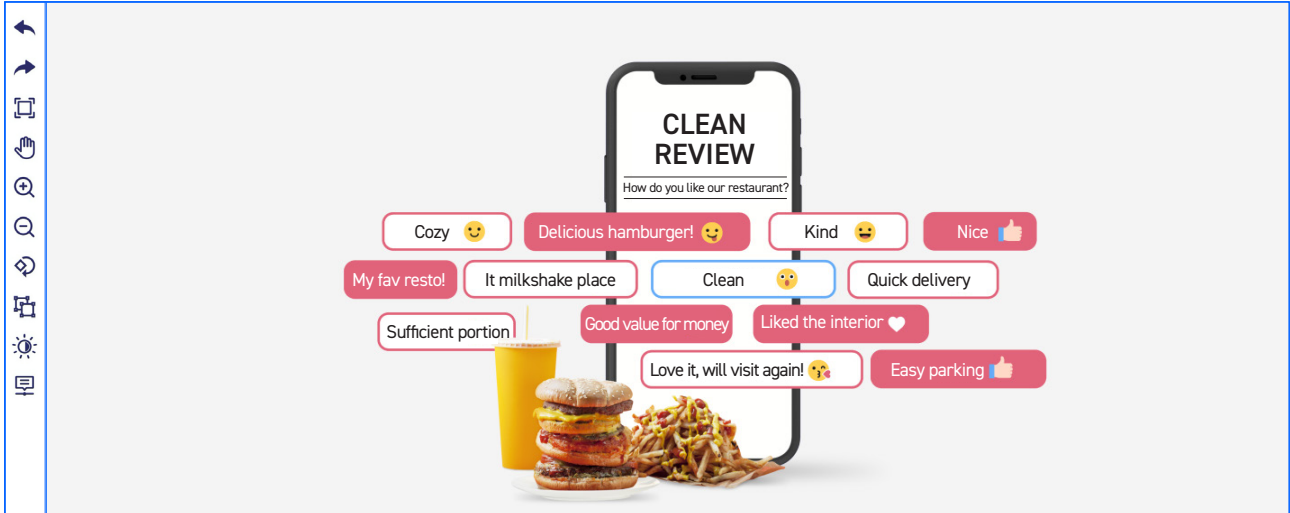
Data volume: 130,000 cases / Duration: 4 months



These days, it is typical to see robots moving around. In order for the serving robot to accurately recognize the person in front of me, various videos were shot at robot eye level in hotels and hospitals. Each person in the video was also tagged with a unique ID. It can be used not only in robot services, but also in intelligent control solutions based on computer vision and CCTV.

Food Delivery platform/review classification and text tagging

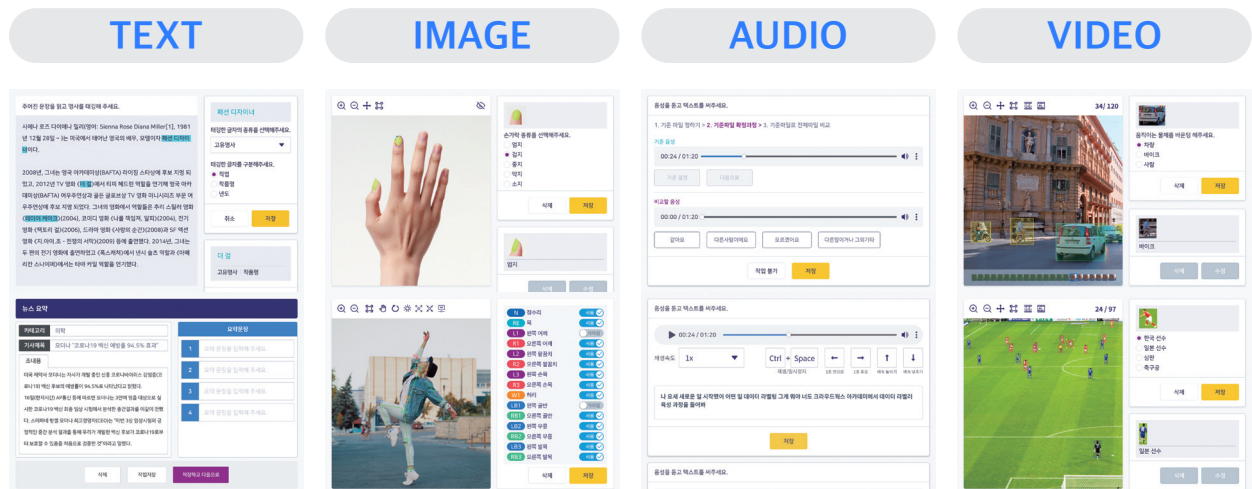
Data volume: 81,000 cases / Period: 6 months



Everyone can't help but agree on the importance of review management. In particular, malicious reviews of Food delivery platforms have become a social problem. So customers' pain points were how to automatically recognize malicious text to protect store owners. Our crowdsourced workers are currently tagging malicious utterances for a clean IT service environment, such as monitoring abusive language / profanity to protect call center agents, and monitoring to sanction sexual harassment in Metaverse.

Data Collection

Thanks to our 390K crowdworkers, we can collect various data from all data types.



QA Dialogues, Tagging, Chatbot, Morpheme Analysis, AI Speaker

Bounding, Key-point, Landmark, OCR, Labeling, Classification

Speech Recognition, Contextual/ Target-Specific Voice Collection, Foreign Language

Video Collection/ Extraction, Tagging/ Labeling, Landmark